

# Steel Counterweight

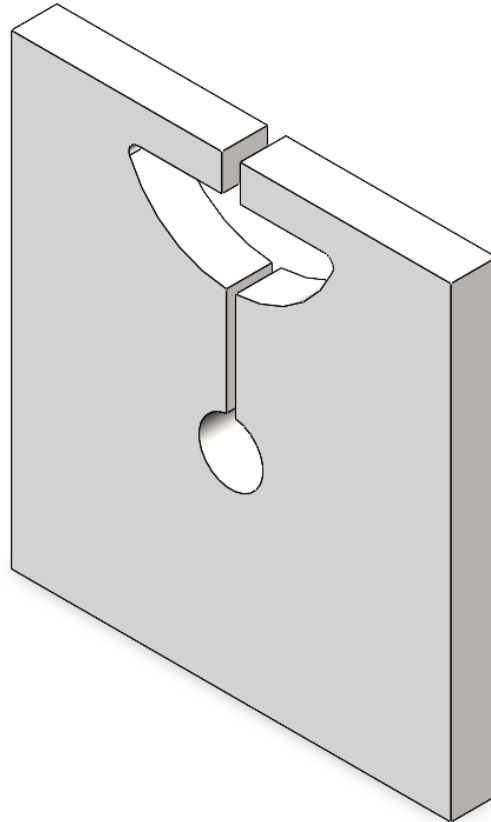
154-17-DATASHEET

## Description

- 50-lb Stackable Counterweight.

## Summary

- A stackable ballast weight used to stabilize non-penetrating outrigger and roof rig systems.



CAD generated drawing.  
Do not manually update.

First angle projection



Scale  
1:2

### INFORMATION

### 154-17-DATASHEET

Weight

**50 lbs**

Material

**Non-painted Steel**

The information contained in this drawing is the sole property of Sky Climber. Any reproduction in part or whole without the written permission of Sky Climber is prohibited.

© 2026 Sky Climber, LLC. All rights reserved. Specifications subject to change without notice.