

Lifeline Termination Plate

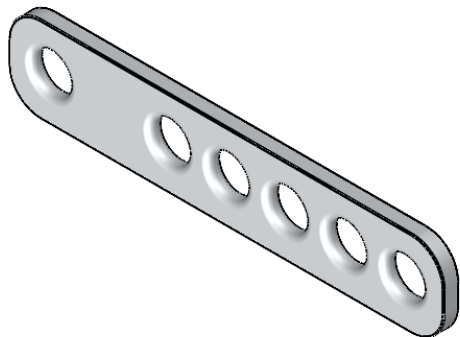
01300-DATASHEET

Description

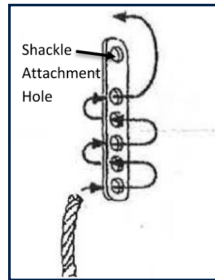
- Aluminum Rope Termination Plate. The quick & simple solution for complying with National Safety Standard and reducing liability exposure.

Summary

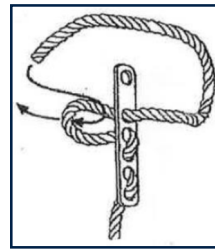
- Provides temporary end-termination solutions without pre-swaged connecting eyes or tying knots.
- Meets OSHA 1926.502 and 1910.66 Regulations.
- Use with 5/8" to 3/4" lifelines.



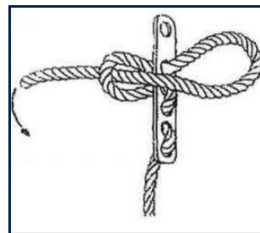
How to rig the lifeline termination plate



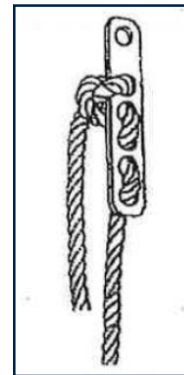
Step #1



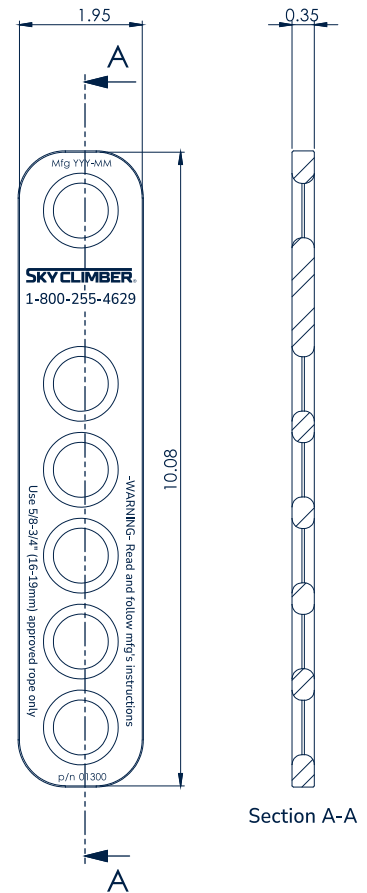
Step #2



Step #3



Step #4



Section A-A

CAD generated drawing.
Do not manually update.

First angle projection



Scale
1:1.5

INFORMATION

Load Capacity

5,000-lb Ultimate

Weight

8 oz

OSHA User Capacity

1 man = +/- 250lb

Material

Adonized Aluminum

01300-DATASHEET

The information contained in this drawing is the sole property of Sky Climber. Any reproduction in part or whole without the written permission of Sky Climber is prohibited.

© 2026 Sky Climber, LLC. All rights reserved. Specifications subject to change without notice.