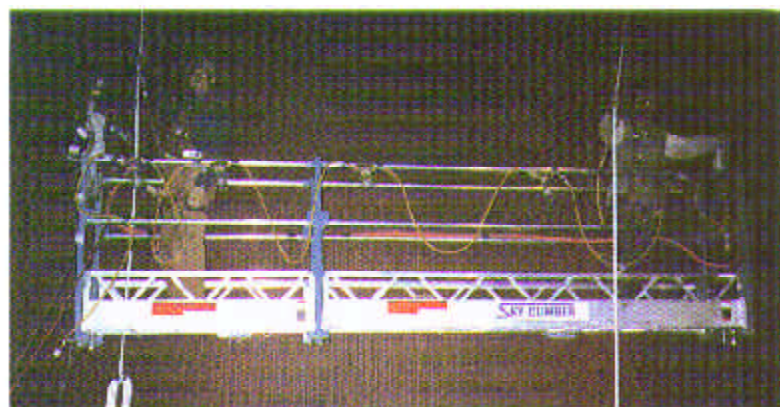


SKY CLIMBERSM

Suspended Access Systems Save Time Save Money

Modular Knock-Down Platform Systems
to Solve Access Problems and
Reduce Industrial Plant Maintenance Costs



Sky Climber, Inc.
1501 Rock Mountain Blvd.
Stone Mountain, GA 30083
770/939/7705
800/255/4629
Fax 770/493/7392

Use Sky Climber MKD2

Save Your Plant Valuable Down Time & Money

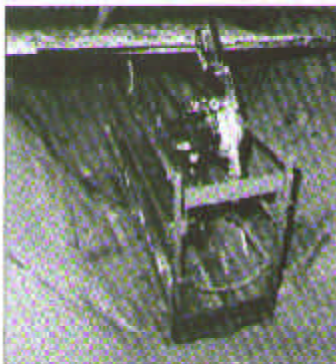
Sky Climber's MKD2 (Modular Knock Down 2) work platforms, when powered by Sky Climber hoists, give safe, fast and complete access to internal boiler walls, digesters, vessels, ducts and other tight places. And they save you time and money.



8:00am Unload 40 ft. of staging.



8:10am Pass components through tight 18" access into work area.



8:25am Complete modular assembly. No tools needed.

The average start to finish time from installation to work is 25 minutes!

Assembles in Minutes

Assemble MKD2 in minutes compared to the hours needed for tubular or frame scaffold.

- 40 feet of MKD2 can be assembled in 25 minutes, without tools and with no loose parts.

Fast Ascent and Descent Speed

With the high cost of lost production, the Sky Climber MKD2 work platform can easily pay for itself during your first emergency shut down. Not only is the erection and dismantling time reduced, fast, 35 feet per minute ascent and descent speeds with Sky Climber hoists help you speed through your work safely.

Engineered for Safety

Sky Climber's MKD2 strong, lightweight, heavy duty aluminum and steel design is precision engineered to give the safe solid feeling you want – especially when working in confined spaces or hundreds of feet off the ground.

Designed for Narrow Access

MKD2 is the BEST solution for boilers, digesters, vessels and most tight places. Delivered to the job site as individual components, each piece is easily passed through existing access doors that are as small as 18 inches in diameter.

Easy Installation

Once the MKD2 components are assembled inside the work area, Sky Climber hoists and all necessary auxiliary/safety equipment can be easily added. Attach wire suspension ropes to the boiler roof, penthouse or "dead-space" anchorages and lower the wire rope into the main combustion chamber. You are now ready to reeve them into the Sky Climber hoists.

With the MKD2 work platform assembled inside the ash-hopper or on a temporary false floor, personnel, the work platform, tools and equipment are ready to be powered to the work area.

American Made

It's more than a matter of pride that MKD2 work platforms are made in Stone Mountain, Georgia. Sky Climber is the only global manufacturer that makes its own platforms and hoists in the USA.

For more information on MKD2 Call...

800-255-4629

Sky Climber MKD2

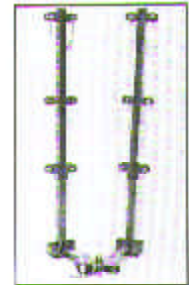
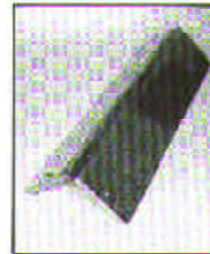
A Full Size Modular Platform that Fits Through an 18" Dia. Opening!

FEATURES:

- Modular hinge and pin design allows MKD2 components to fit through an 18 in. opening.
- Folding connecting frames and stirrups assemble in tight places. Assemble a complete platform in less than 25 minutes.
- No tools needed; no nuts, bolts or screws to drop or lose.
- Lightweight Heavy Duty Aluminum and Steel.
- Load up to a 40 ft. platform in a small truck.
- Load Ratings:
5 ft. to 30 ft. load rated at 1000 lbs.
35 ft. or 40 ft. load rated at 750 lbs.
- Modular 2.5 ft., 5 ft. and 10 ft. components.
- Meets or exceeds OSHA requirements.
- U.L. Classified.

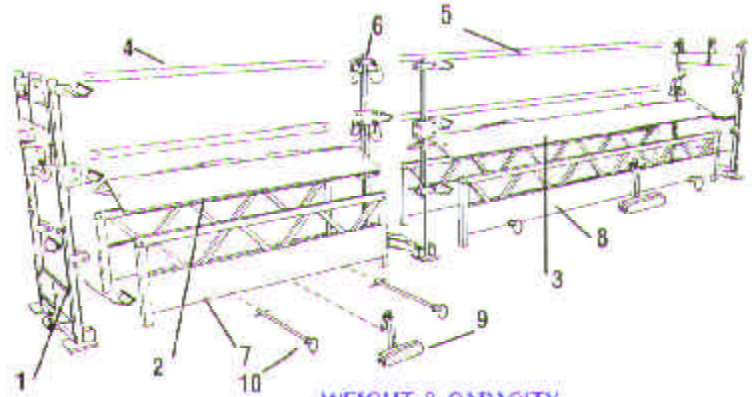


*Unique Hinge & Pin Design
Folding Connecting Frames & Stirrups.
Assembles in tight places in less than 25 minutes.
No Tools Needed.
No Lost Parts.*



DESCRIPTION	PART NO.
1. Folding End Stirrup	111-519
2. Folding 5 ft. Floor	111-526
3. Folding 10 ft. Floor	111-527
4. 5 ft. Side Rail (Typical 4 pcs.)	111-411-5
5. 10 ft. Side Rail (Typical 4 pcs.)	111-411-10
6. Folding Connecting Frame	111-521
7. 5 ft. Side Panel	111-523
8. 10 ft. Side Panel	111-524
9. Wall Roller	112-140
10. Floor Pin	111-441

- Platform Sections may not be used in configurations and lengths other than those shown in table below without S.C.I. engineering written approval.



MKD2 CONFIGURATION

LENGTH	PART NO.	END STIRRUP		FLOOR		SIDE PANEL		SIDE RAIL		111-441 FLOOR PINS		112-140 WALL ROLLER	
		111-519	111-521	10 FT 111-527	5 FT 111-526	10 FT 111-524	5 FT 111-523	10 FT 111-411-10	5 FT 111-411-5	111-441	112-140		
5 ft.	111-526-05S	2			1		2		4	2	2		
10 ft.	111-526-10S	2		1		2		4	2	2			
15 ft.	111-526-15S	2	1	1	1	2	2	4	4	4	2		
20 ft.	111-526-20S	2	1	2		4		8	4	4	2		
25 ft.	111-526-25S	2	2	2	1	4	2	8	4	8	2		
30 ft.	111-526-30S	2	2	3		6		12	6	6	2		
35 ft.	111-526-35S	2	3	3	1	6	2	12	4	8	2		
40 ft.	111-526-40S	2	4	3	2	6	4	12	3	10	2		

WEIGHT & CAPACITY

LENGTH	CONFIGURATION	TOTAL WEIGHT	RATED CAPACITY
5 ft.	5	211 lbs	1000
10 ft.	10	308	1000
15 ft.	10 5	433	1000
20 ft.	10 10	510	1000
25 ft.	10 5 10	636	1000
30 ft.	10 10 10	713	1000
35 ft.	10 10 10 5	840	750
40 ft.	5 10 10 10 5	965	750

*All drawings in this brochure are for illustrative purposes only. This brochure is intended for general information only. Because of the many variables which affect the performance of the product line, some of the information in this brochure may not apply. For special applications contact Sky Climber.
Note: Erection, use, maintenance and disassembly must conform to current Sky Climber instructions as well as all federal, state and local regulations.
Copies of complete safety guidelines for these and other products are available from Sky Climber without charge. © 1997 Sky Climber Inc. All Rights Reserved.

For more information on MKD2 Call . . . 800-255-4629

Sky Climber Is The Problem Solver

Problem: How To Increase Safety Awareness

Solution: Sky Climber's Standard and Customized Training Courses



Sky Climber is first in safety and training. To help our customers achieve 'Zero Accidents' – the goal for the Sky Climber Training Team – Sky Climber offers Safety & Application Training and Service & Repair Training. We believe that training and education are vital to the safe and proper use and maintenance of Sky Climber products.

In addition to our proven field effective courses, we customize courses for our customers. We know you have specific needs. We will gladly assist you in developing specialized training programs that will meet your special situations.

The goal is simple:

Working together and making a commitment to safety will allow us all achieve "Zero Accidents".

From the classroom to hands-on training, at our facility or your plant, Sky Climber is glad to help.

Problem: Fast Inspections and Minor Repairs in Tight Access Situations

Solution: Sky Climber Bosun Chair and Fold-Up Work Cage



Fold-Up Work Cage



Bosun Chair

Sky Climber offers the ever dependable, demountable **Bosun Chair**, designed to meet tight access situations:

- Fits an 18 inch opening
- Weighs less than 40 lbs.
- Wheels for portability
- Extra back support
- Cable Guide

For fast inspections, use the **Fold Up Work Cage**

- Fits through an 18 inch opening
- Unfolds and assembles in just minutes
- Fit with a Sky Climber Alpha 1000 hoist, the work cage rated load capacity is 500 lbs. on each side (total 1,000 lbs.).
- U.L. classified; meets or exceeds OSHA requirements

Problem: The Job Needs to be Completed FAST

Solution: Sky Climber Air Powered Hoists for Faster Ascent Speed and Lift



Sky Climber Compact is now available in three models, 750 lbs., 1000 lbs., and 1250 lbs. Now there is a Sky Climber Model Compact hoist for almost any application. The air model hoist weighs only 76 lbs. and comes complete with the secondary safety brake, Sky Lock III. Sky Climber warranty is second to none!

Low Amp Draw

Power Light Indicator

Hour Meter Optional

Air Power: 70 CFM

Oiler & Lubricator Included

Ascent Speed:

Descent Speed:

Wire Rope:

Size: 30" x 13.5" x 17 3/4"

Dual Control - hoist or plug-in pendant option

Two Carrying Handles

Inexpensive annual maintenance

Electric Power: 1.1 kW/1.5 HP

100 PSI 220 V/ 60Hz Single Phase

6.5 Amp line current, 10-3 cable

32 feet per minute

35 feet per minute

5/16", 5 x 26 steel wire rope

Fits through an 18" round opening

Sky Climber, Inc. Your Total Access Solutions for Hoists, Platforms, Rigging and Accessories

1501 Rock Mountain Blvd. • Stone Mountain, Ga 30083

770/939/7705 • 800/255/4629 • Fax 770/493/7392