

SKY CLIMBER

B.M.U. & P.I. Division

www.skyclimber.es

Experience. Dynamic. Global. Excellence.



B.M.U. & P.I. Division

www.skyclimber.es



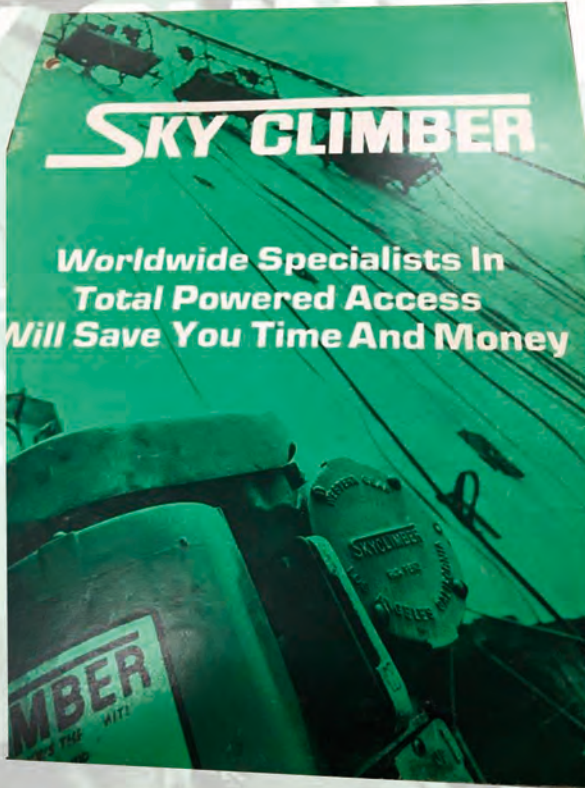
Part of the Sky Climber® Group, we are a multi-national company and the most recognized name in the world of suspended access solutions since 1955. Sky Climber® Spain is the company within the group specializing in the design and manufacture of BMUs (Building Maintenance Units) and PIs (Permanent Installations). Our aim is to respond to the increasing demand for Facade Access Systems with comprehensive solutions that are high quality, efficient and safe. On time and on budget.

Our team of engineers has been working together for more than 15 years designing and manufacturing BMU solutions.

We have completed and handed over more than 500 PI projects all around the world.

We provide project-specific solutions both for new building projects and for retrofits to existing buildings.

OUR VISION & PRINCIPLES



A BRIEF HISTORY

1955:

Founding of SkyClimber Inc.

First Global Suspended Access Equipment Company in the world

1969:

Founding of SkyClimber Europe.

Export base for Europe and rest of the world.
Supplying suspended access equipment to Europe, Middle East and Asia.

Sky Climber® is the leader for suspended access solutions worldwide since 1955.

The team at Sky Climber BMU & PI is ready to provide you with all that is required to determine the right solution and ensure your complete satisfaction.

“Our target is to always provide you with the best sales and service assistance (by phone, online, etc.).”

Carlos Cremades
Managing Director

SKY CLIMBER® BMU & P.I. DIVISION is based on 5 points:

1. KNOW HOW

Our team of engineers is capable of solving the most complex challenges that arise. We always seek the best solution in terms of price and quality for our customers.

2. SAFETY & COMPLIANCE

We understand, and can fulfill, all the requirements and enforceable laws in each country where our equipment is installed. Internal quality control equipment and testing by our engineers. All units are tested at our facilities before shipment.

3. COMMERCIAL AND TECHNICAL SUPPORT

We have a team of commercial and technical professionals who are in constant contact with our distribution network worldwide. We listen to the needs of the customer. Maximum satisfaction is our goal.

4. QUALITY

Our strict internal quality plan ensures that our equipment is manufactured to the highest quality standards. All our components are manufactured or sourced by us exclusively from European or US origin.

5. AFTER-SALE SERVICE

We have ability to deploy technicians or engineers worldwide to solve any problem or need that our customers may have. 24 hour service hot line to give immediate response. We provide consultation services to evaluate and advise on partial retrofit or complete replacement of existing machines. Spare parts can be delivered anywhere in the world (parts in stock).. within 72 hours.



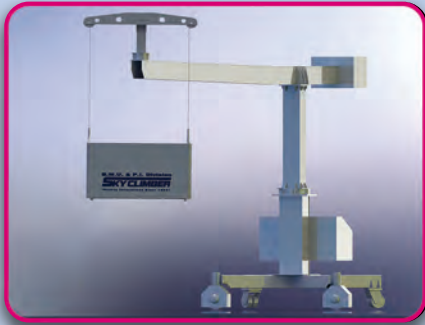
RANGE OF PRODUCTS



Sky Climber® provides the best solutions for all buildings and structures requiring a permanent access system. Each machine is tailored to the specific building.

MAIN PRODUCTS - CUSTOMIZED TO THE PROJECT

BMU MODEL "S1"



BMU MODEL "S2"



BMU MODEL "ST"



SELF POWERED CRADLES



DAVITS



GANTRIES



OTHER SPECIALS SOLUTIONS & SERVICES





BMU MODEL Gondola modelo S1

SPECIFICATIONS

CARACTERISTICAS

Model / Modelo:	S1
Type of jib / Tipo pluma:	Single jib / Monopluma
Max. reach / Máx. alcance:	14 m. (approx)
Primary finish / Acabado:	HDG / Galvanizado
Painted finishes/ Pintado:	RAL
Emergency stop / Emergencias:	Included / Incluido.
Manual rescue system Sistema de rescate manual	Included / Incluido.
Micro switches for all movements Micros de seguridad	Included / Incluido.
Stabilization system Sistema de retención	> 40 m.

OPTIONS

OPCIONES

Cable winder / Enrollador de cable.
Water tanks / Tanques de agua.
Hard wired telephone / Teléfono.
Telescoping mast / Mástil telescópico.
Luffing of jib / Elevación de pluma.
Luffing of head / Elevación de cabeza.
Aluminum finished / Acabado en aluminio.
Anemometer / Anemómetro.
Auxiliary material hoist / Cabrestante.



BMU's are custom-made for each individual project. Please contact us for details.



BMU MODEL Gondola modelo S2

SPECIFICATIONS CARACTERISTICAS

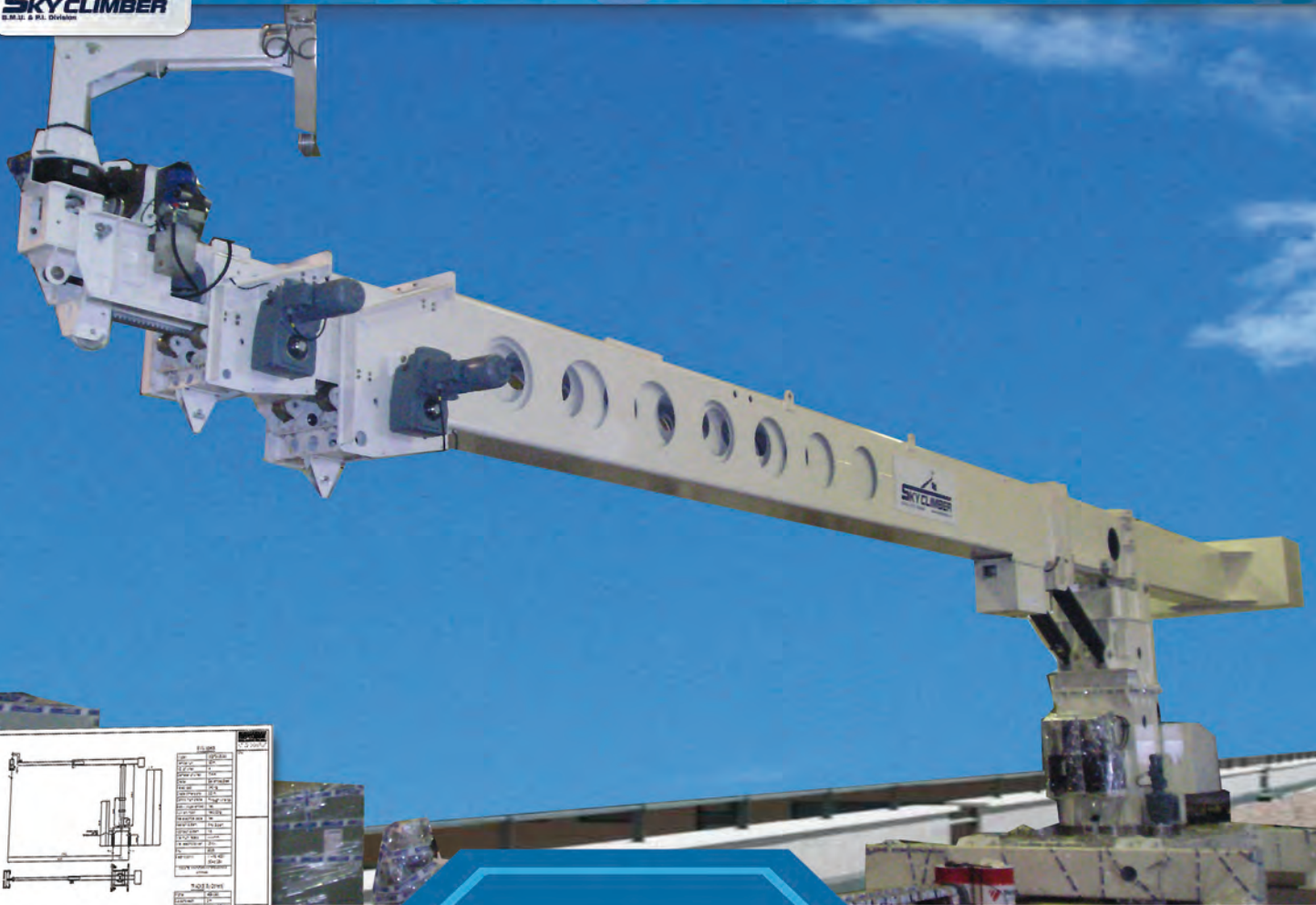
Model / Modelo:	S2
Type of jib / Tipo pluma:	Double jib / Bipluma
Max. reach / Máx. alcance:	5 m. (approx)
Primary finish / Acabado:	HDG / Galvanizado
Painted finishes / Pintado:	RAL
Emergency stop / Emergencias:	Included / Incluido.
Manual rescue system Sistema de rescate manual	Included / Incluido.
Micro switches for all movements Micros de seguridad	Included / Incluido.
Stabilization system Sistema de retención	> 40 m.

OPTIONS OPCIONES

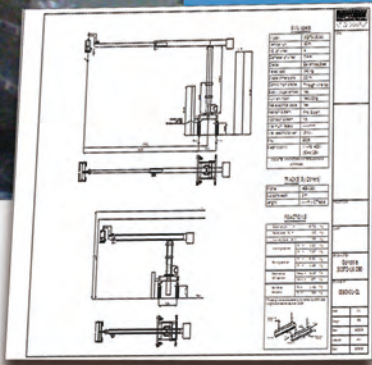
Cable winder / Enrollador de cable.
Water tanks / Tanques de agua.
Hard wired telephone / Teléfono.
Safety line / Línea de seguridad.
Luffing of jib / Elevación de pluma.
Vulkolan wheels/ Ruedas de vulkolan.
Aluminum finished / Acabado en aluminio.
Anemometer / Anemómetro.
Auxiliary material hoist / Cabrestante.



BMU's are custom-made for each individual project. Please contact us for details.



BMU MODEL Gondola modelo ST



SPECIFICATIONS CARACTERISTICAS

Model / Modelo:	ST
Type of jib / Tipo pluma:	Telescopic jib / <i>Teloscóp.</i>
Max. reach / Máx. alcance:	Project specific / <i>A definir.</i>
Primary finish / Acabado:	HDG / <i>Galvanizado</i>
Painted finishes / Pintado:	RAL
Sec. emergencies / Emergencias:	Included / <i>Incluido.</i>
Manual rescue system <i>Sistema de rescate manual</i>	Included / <i>Incluido.</i>
Micro switches for all movements <i>Micros de seguridad</i>	Included / <i>Incluido.</i>
Stabilization system <i>Sistema de relención</i>	> 40 m.

OPTIONS OPCIONES

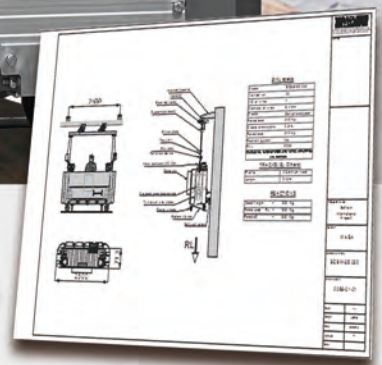
Cable winder / <i>Enrollador de cable.</i>
Water tanks / <i>Tanques de agua.</i>
Hard wired telephone / <i>Teléfono.</i>
Telescoping mast / <i>Mástil telescópico.</i>
Luffing of jib / <i>Elevación de pluma.</i>
Luffing of head / <i>Elevación de cabeza.</i>
Aluminum finished / <i>Acabado en aluminio.</i>
Anemometer / <i>Anemómetro.</i>
Auxiliary material hoist / <i>Cabrestante.</i>



BMU's are custom-made for each individual project. Please contact us for details.



SELFPOWERED CRADLE SC



SPECIFICATIONS CARACTERISTICAS

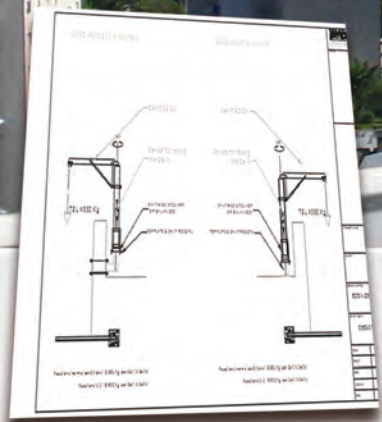
Model / Modelo:	SC
Type of jib / Tipo pluma:	--
Max. reach / Máx. alcance:	--
Primary finish / Acabado:	Aluminum / Aluminio Steel / Acero
Painted / Pintado:	RAL
Emergency stop / Emergencias:	Included / Incluido.
Manual rescue system Sistema de rescate manual	Included / Incluido.
Micro securities for all movements Micros de seguridad	Included / Incluido.
Stabilization system Sistema de retención	> 40 m.

OPTIONS OPCIONES

Wall rollers / Rodillos.
Water tanks / Tanques de agua.
Hard wired telephone / Teléfono.
Safety line / Línea de seguridad.
Cable winder / Enrollador de cable.
Aluminum finished / Acabado en aluminio.
Anemometer / Anemómetro.



BMU's are custom-made for each individual project. Please contact us for details.



DAVIT MODEL SD

SPECIFICATIONS CARACTERISTICAS

Model / Modelo:	SD
Type of jib / Tipo pluma:	N/A.
Max. reach / Máx. alcance:	3 m. (aprox)
Primary finish / Acabado:	HDG / Galvanizado
Painted finishes / Pintado:	RAL
Emergency stop / Emergencias:	Included / Incluido.
Manual rescue system / Sistema de rescate manual	N/A.
Micro switches for all movements / Micros de seguridad	Included / Incluido.
Stabilization system / Sistema de retención	N/A.

OPTIONS OPCIONES

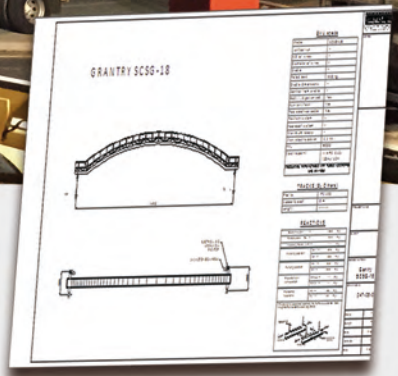
Telescoping jib / Pluma telescópica.
Portable/ Portablc.
Aluminum finished / Acabado en aluminio.
Anemometer / Anemómetro.
Auxiliary material hoist / Cabrestante.
Roof-mounted hoist.;



BMU's are custom-made for each individual project. Please contact us for details.



GANTRY MODEL SG

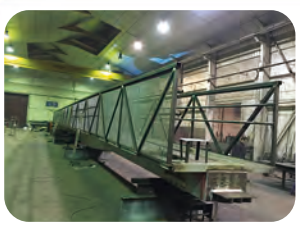


SPECIFICATIONS CARACTERISTICAS

Model / Modelo:	SG
Type of jib / Tipo pluma:	--
Max. reach / Máx. alcance:	--
Primary finished / Acabado:	Aluminum / Aluminio Steel / Acero
Painted finishes / Pintado:	RAL
Emergency stop / Emergencias:	Included / Incluido.
Manual rescue system Sistema de rescate manual	Included / Incluido.
Micro switches for all movements Micros de seguridad	Included / Incluido.
Stabilization system Sistema de retención	N/A.

OPTIONS OPCIONES

Rollers / Rodillos.
Water tanks / Tanques de agua.
Hard wired telephone / Teléfono.
Safety line / Línea de seguridad.
Aluminum finished / Acabado en aluminio.
Anemometer / Anemómetro.
Flat and sloped applications / Para uso sobre zonas planas e inclinadas.



BMU's are custom-made for each individual project. Please contact us for details.

RETROFIT MACHINES



CUSTOMIZED SOLUTIONS



LIFTING TABLES



SPECIAL SOLUTIONS

TRAIN MAINTENANCE SYST.



STRUCTURAL ENGINEERING



LIFTING PLATFORMS AND CRANES

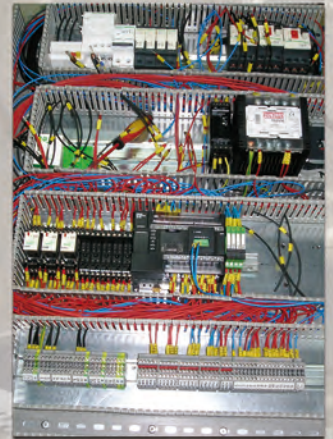


AFTER SALES SERVICE



We specify and supply all the genuine spare parts that you need to service your equipment.

Sky Climber technicians professionally repair and service our own machines, as well as those from other manufacturers, to your complete satisfaction.

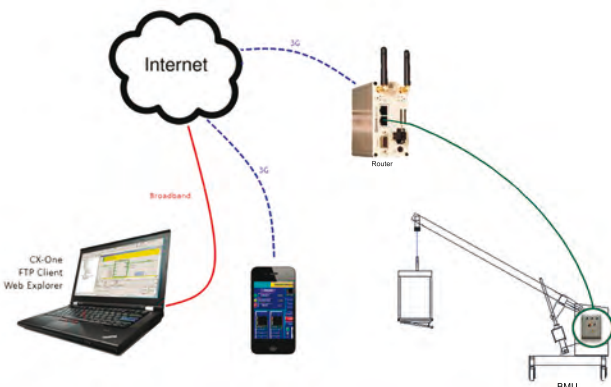


I+D RESEARCH



SKY O.R.A. Online Remote Assistance

PLC Data can be examined remotely by Sky Climber to trouble-shoot a potential electrical or control malfunction in the BMU.
Time is saved by dispatching a technician to the site with the correct parts on the first visit.



BMU + Joystick



Special Systems



QUALITY ASSURANCE

"WHEN A TEAM IS DEEPLY COMMITTED TO WHAT IT IS DOING, WHEN OUR SOLUTIONS ARE FOCUSED ON THE SATISFACTION OF OUR CUSTOMERS, WHEN WE NEVER TIRE OF SEEKING INNOVATION IN OUR WORK, _ IT'S BECAUSE WE LOVE WHAT WE DO AND THAT'S OUR GREATEST ADVANTAGE "

Our target is to always provide you with the best sales and service assistance (by phone, online, etc.).



Each machine is delivered with a complete operations manual and a declaration of conformity.

We identify and supply all the genuine spare parts that you need to service your equipment.



All our machines are designed and manufactured to comply with European Norm EN1808.

Sky Climber technicians professionally repair and service our own machines, as well as those from other manufacturers, to your complete satisfaction.



All our machines comply with European Machine Directive 2006/42/CE and revisions.

All our machines are CE marked.

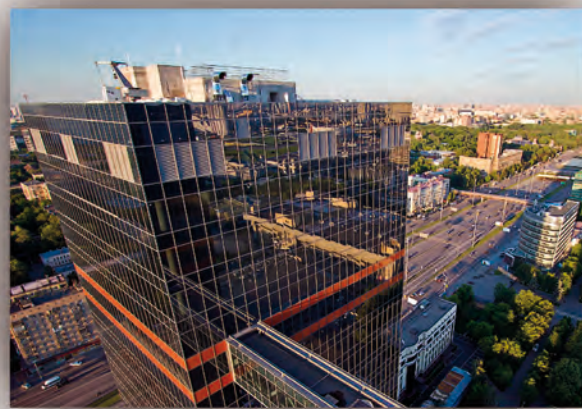
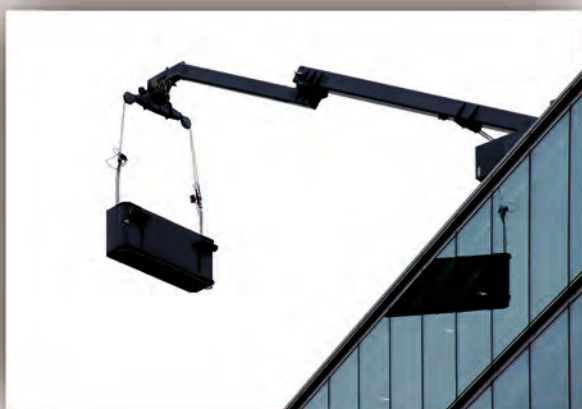
CONSULTING SERVICES

ENGINEERING SERVICES:

- ✓ Project development.
- ✓ Certification and testing
- ✓ Project management.
- ✓ Viability studies.

ARCHITECTURAL SERVICES:

- ✓ Equipment layout.
- ✓ Integration with Facade systems.
- ✓ Design management
- ✓ Value engineering solutions.



WORLDWIDE OFFICE



**SKY CLIMBER® IS A GLOBAL COMPANY WITH OFFICES
AROUND THE WORLD**



SKYCLIMBER
B.M.U. & P.I. Division

c/ Alsasua, 16 2ºD
28023 Madrid, Spain

Ph: +34 911 610 628
Fax: +34 913 729 462

Email: info@skyclimber.es



SKYCLIMBER, LLC

1800 Pittsburgh Drive
Delaware, OH 43015 USA

Ph: 740 203 3900 - Toll Free: 800 255 4629
Fax: 740 203 3901

Email: info@skyclimber.com



N.V. SKY CLIMBER EUROPE, S.A.

K.M.O. Zone Itterbeek
Nijverheids Straat 23, Duffel B 2570 Belgium

Ph: 32 3 887 81 20
Fax: 32 3 887 09 94

Email: info@skyclimber.be

“As the premier team of professionals in the industry, we are proud to maintain a vision of every project that is totally focused on customer satisfaction. What makes us different is our passion for innovation and our unique position as a member of the global Sky Climber Group”

Carlos Cremades (Managing Director, Sky Climber BMU & PI)

SKY CLIMBER, LLC
OHIO - USA

N.V. SKY CLIMBER EUROPE, S.A.
ANTWERP - BELGIUM

SKY CLIMBER SPAIN, S.L.
BMU & P.I. DIVISION
MADRID - SPAIN

SKY CLIMBER SPAIN, S.L. BMU & P.I. DIVISION

C/ ALSASUA, 16 2ºD
28023 MADRID
SPAIN

TELEPHONE +34 911 610 628
FAX +34 913 729 462
E-MAIL info@skyclimber.es
INTERNET www.skyclimber.es

Authorized dealer:

